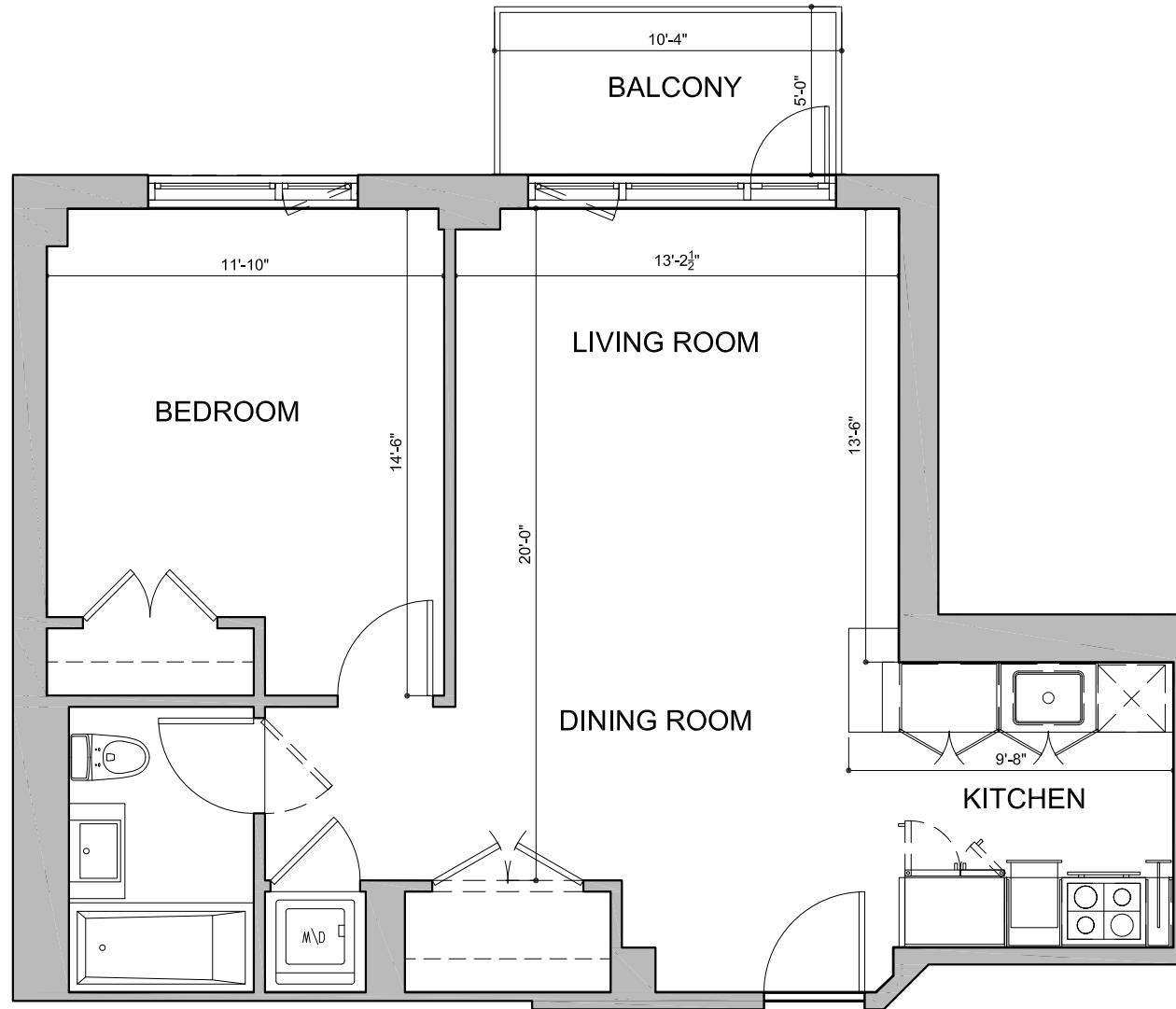


225 NORTH 9TH STREET

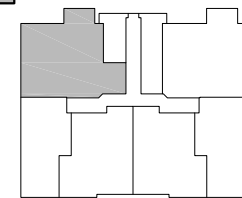
BROOKLYN, NEW YORK



UNIT A

1 BEDROOM APARTMENT
TYPICAL FLOOR (2ND - 6TH)

SQ. FT.	648
BALCONY	51
TOTAL	699

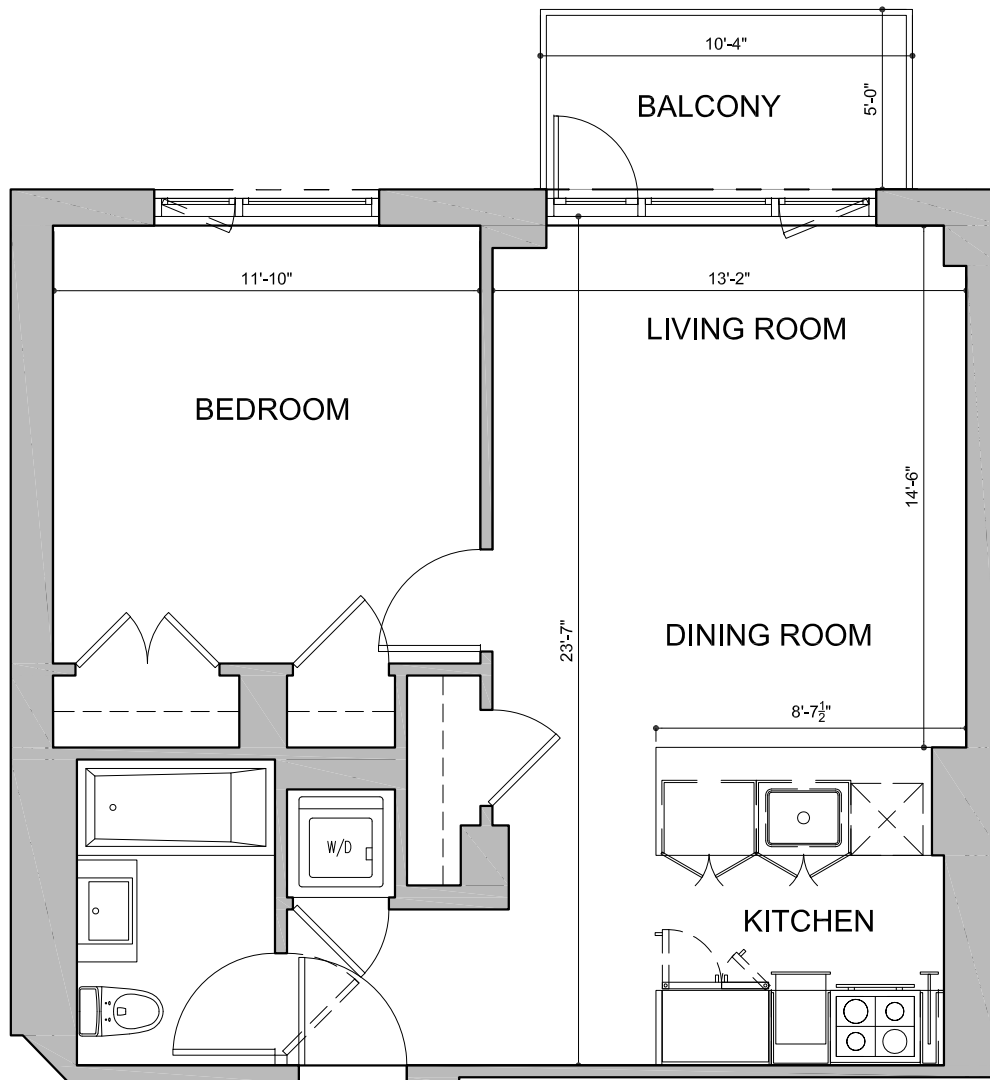


DISCLAIMER: ALL DIMENSIONS ARE APPROXIMATE. DRAWINGS MAY NOT REFLECT ALL CONSTRUCTION VARIANCES IN UNIT LINE.



225 NORTH 9TH STREET

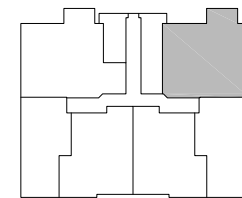
BROOKLYN, NEW YORK



UNIT B

1 BEDROOM APARTMENT
TYPICAL FLOOR (2ND - 6TH)

SQ. FT.	562
BALCONY	51
TOTAL	613

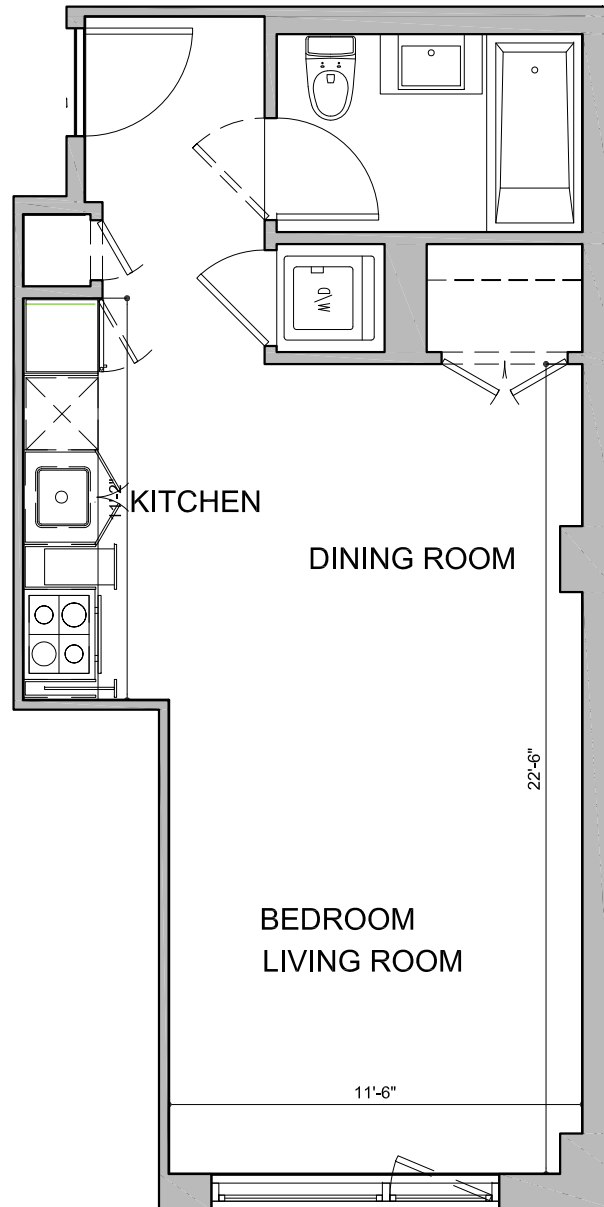


DISCLAIMER: ALL DIMENSIONS ARE APPROXIMATE. DRAWINGS MAY NOT REFLECT ALL CONSTRUCTION VARIANCES IN UNIT LINE.



225 NORTH 9TH STREET

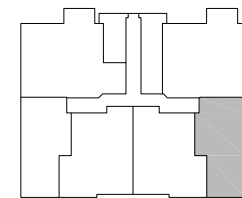
BROOKLYN, NEW YORK



UNIT C

STUDIO
TYPICAL FLOOR (2ND - 6TH)

SQ. FT.	425
TOTAL	425

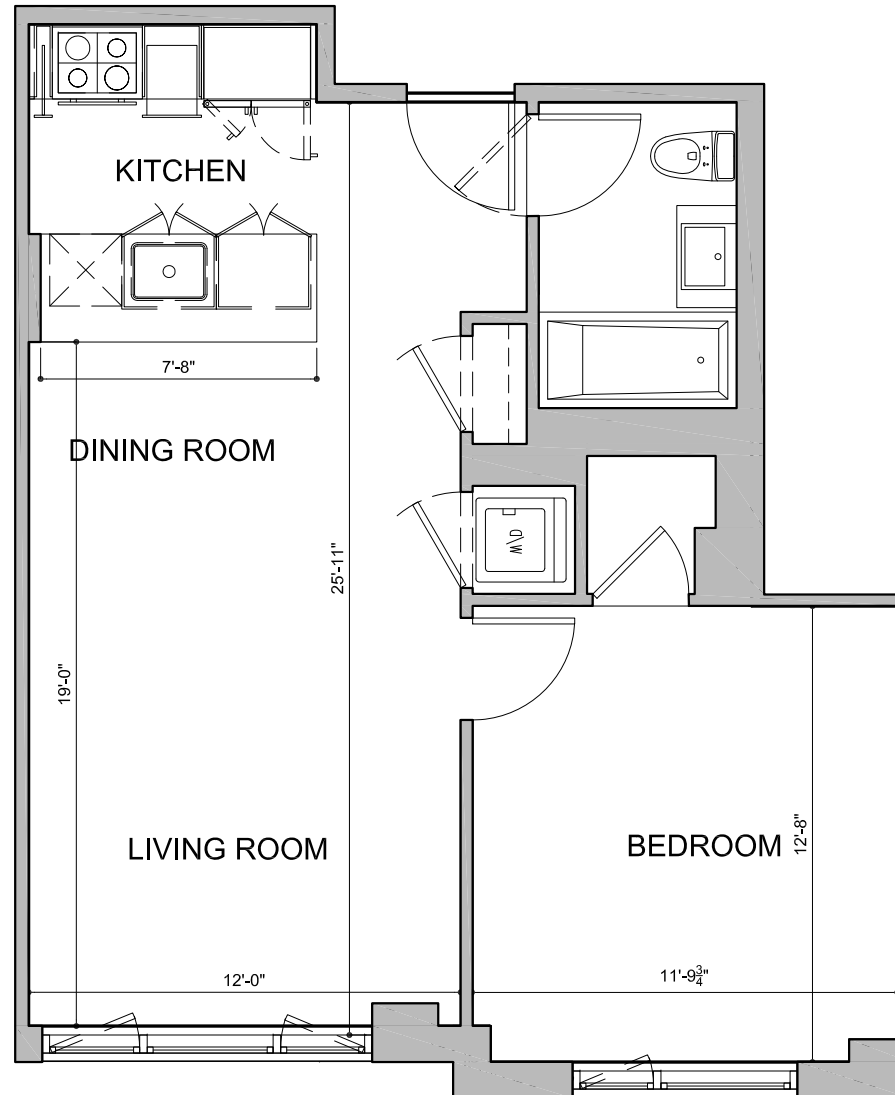


DISCLAIMER: ALL DIMENSIONS ARE APPROXIMATE. DRAWINGS MAY NOT REFLECT ALL CONSTRUCTION VARIANCES IN UNIT LINE.



225 NORTH 9TH STREET

BROOKLYN, NEW YORK



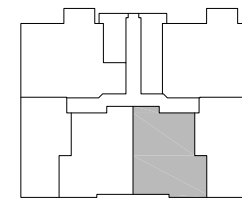
UNIT D

1 BEDROOM APARTMENT

2ND FLOOR

SQ. FT. 567

TOTAL 567

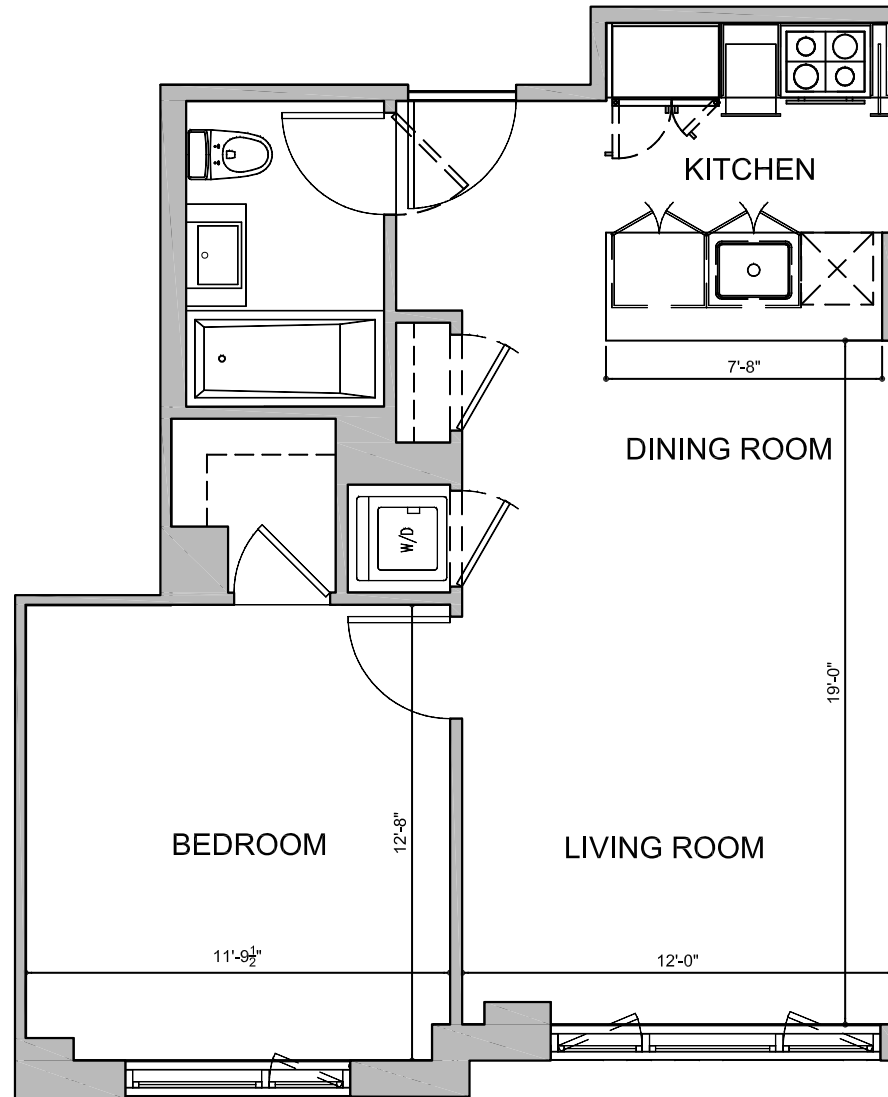


DISCLAIMER: ALL DIMENSIONS ARE APPROXIMATE. DRAWINGS MAY NOT REFLECT ALL CONSTRUCTION VARIANCES IN UNIT LINE.



225 NORTH 9TH STREET

BROOKLYN, NEW YORK



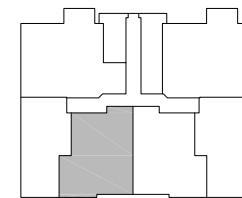
UNIT E

1 BEDROOM APARTMENT

2ND FLOOR

SQ. FT. 574

TOTAL 574

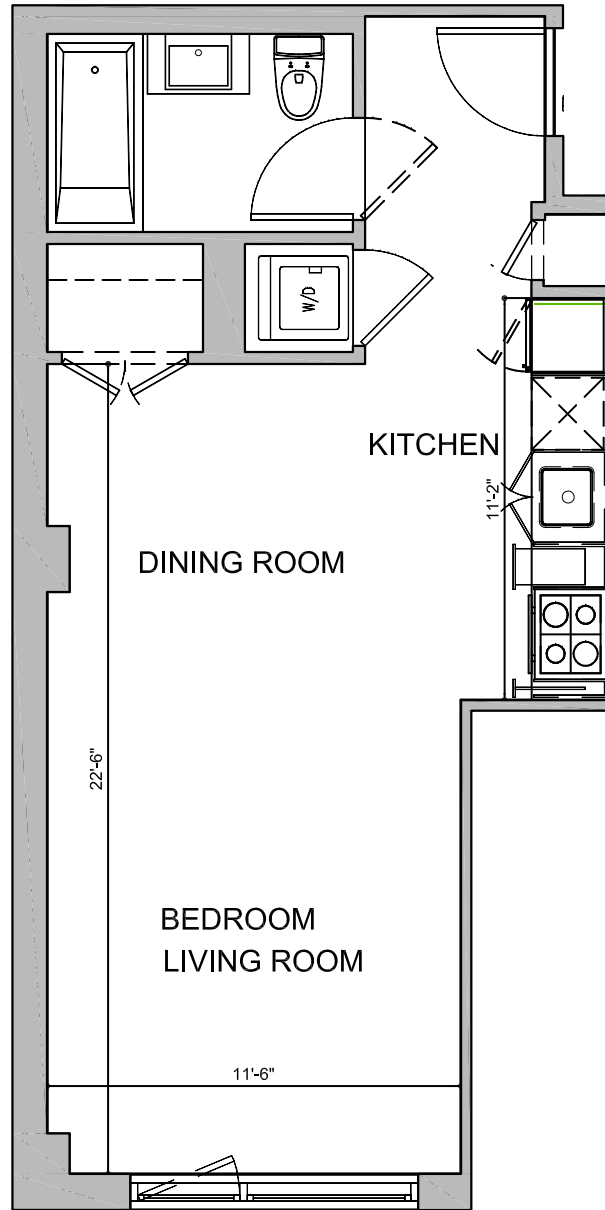


DISCLAIMER: ALL DIMENSIONS ARE APPROXIMATE. DRAWINGS MAY NOT REFLECT ALL CONSTRUCTION VARIANCES IN UNIT LINE.



225 NORTH 9TH STREET

BROOKLYN, NEW YORK



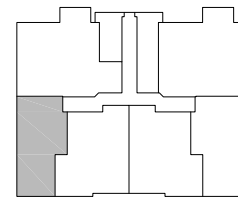
UNIT F

STUDIO

TYPICAL FLOOR (2ND - 6TH)

SQ. FT. 424

TOTAL 424

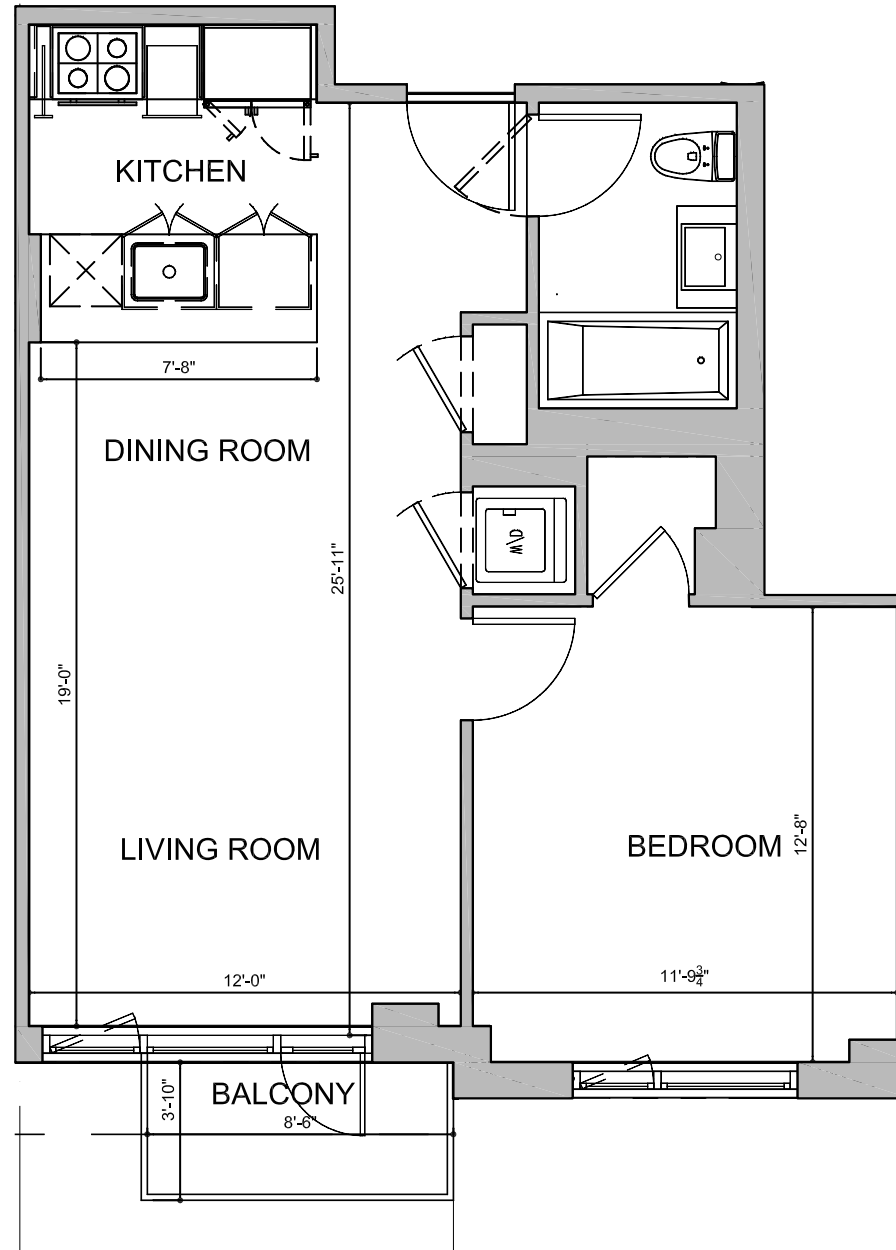


DISCLAIMER: ALL DIMENSIONS ARE APPROXIMATE. DRAWINGS MAY NOT REFLECT ALL CONSTRUCTION VARIANCES IN UNIT LINE.



225 NORTH 9TH STREET

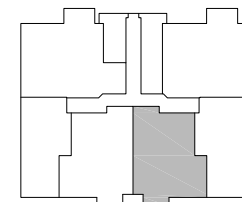
BROOKLYN, NEW YORK



UNIT D

1 BEDROOM APARTMENT
TYPICAL FLOOR (3RD - 6TH)

SQ. FT.	567
BALCONY	33
TOTAL	600

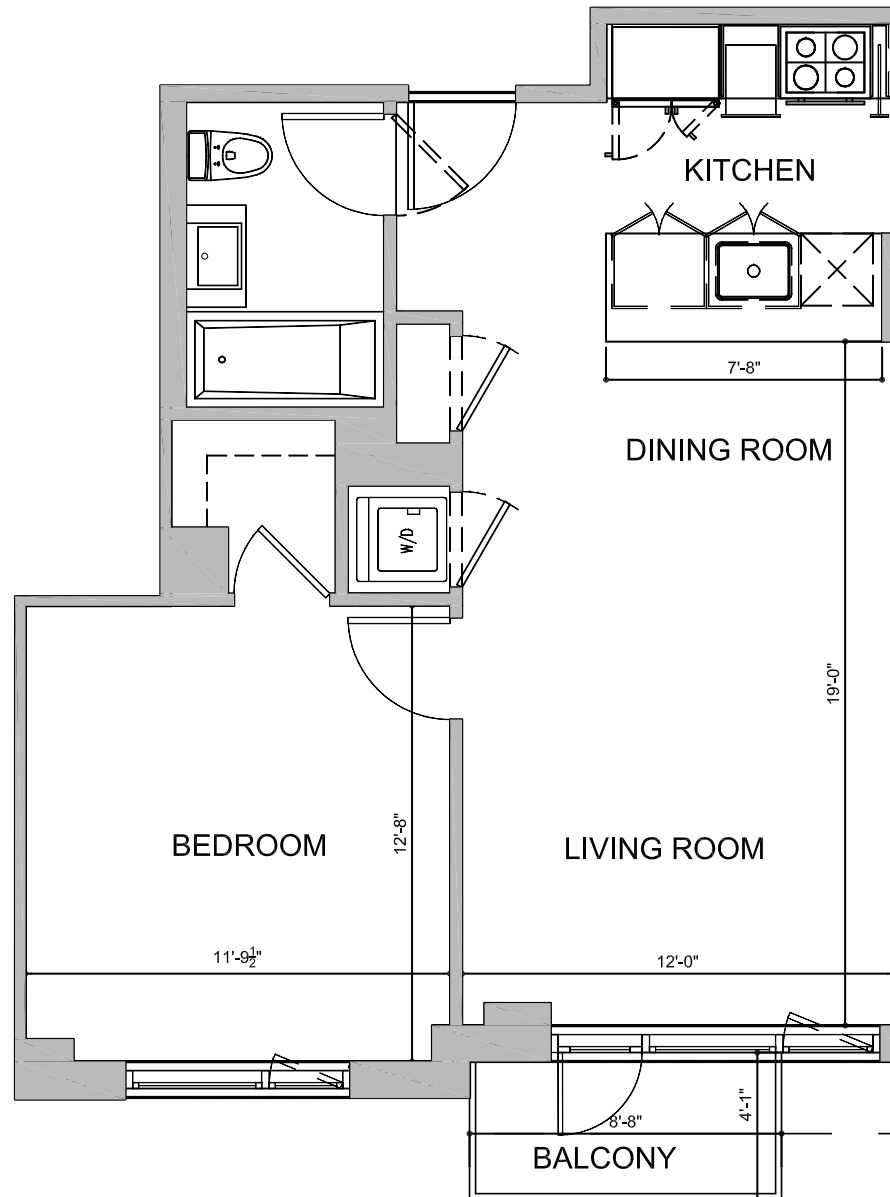


DISCLAIMER: ALL DIMENSIONS ARE APPROXIMATE. DRAWINGS MAY NOT REFLECT ALL CONSTRUCTION VARIANCES IN UNIT LINE.



225 NORTH 9TH STREET

BROOKLYN, NEW YORK



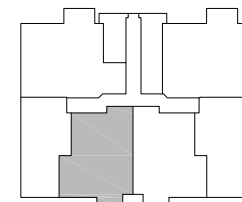
UNIT E

1 BEDROOM APARTMENT
TYPICAL FLOOR (3RD - 6TH)

SQ. FT. 574

BALCONY 33

TOTAL 607

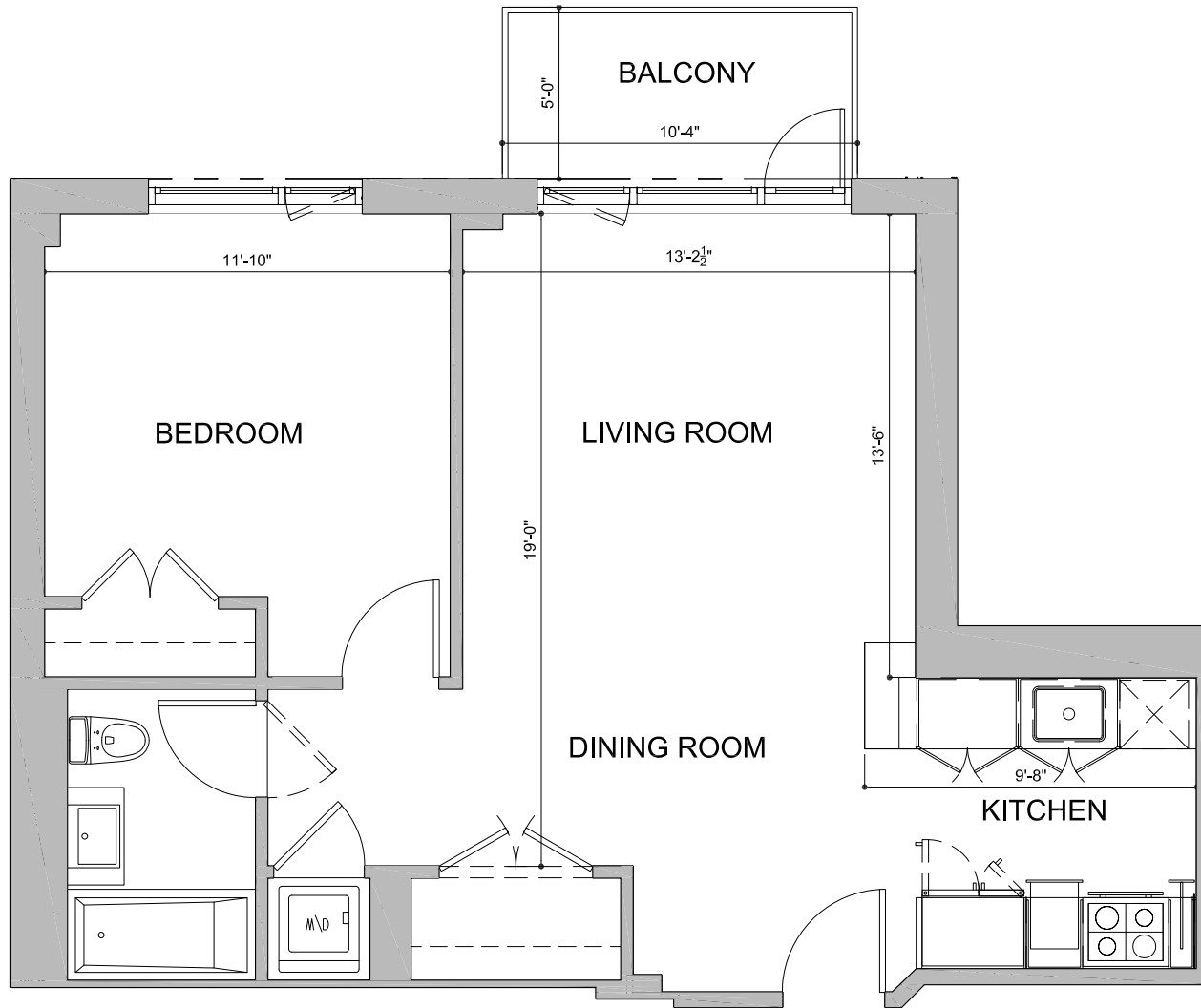


DISCLAIMER: ALL DIMENSIONS ARE APPROXIMATE. DRAWINGS MAY NOT REFLECT ALL CONSTRUCTION VARIANCES IN UNIT LINE.



225 NORTH 9TH STREET

BROOKLYN, NEW YORK



UNIT A

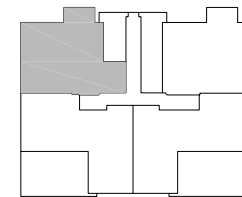
1 BEDROOM APARTMENT

7 TH FLOOR

SQ. FT. 627

BALCONY 51

TOTAL 678

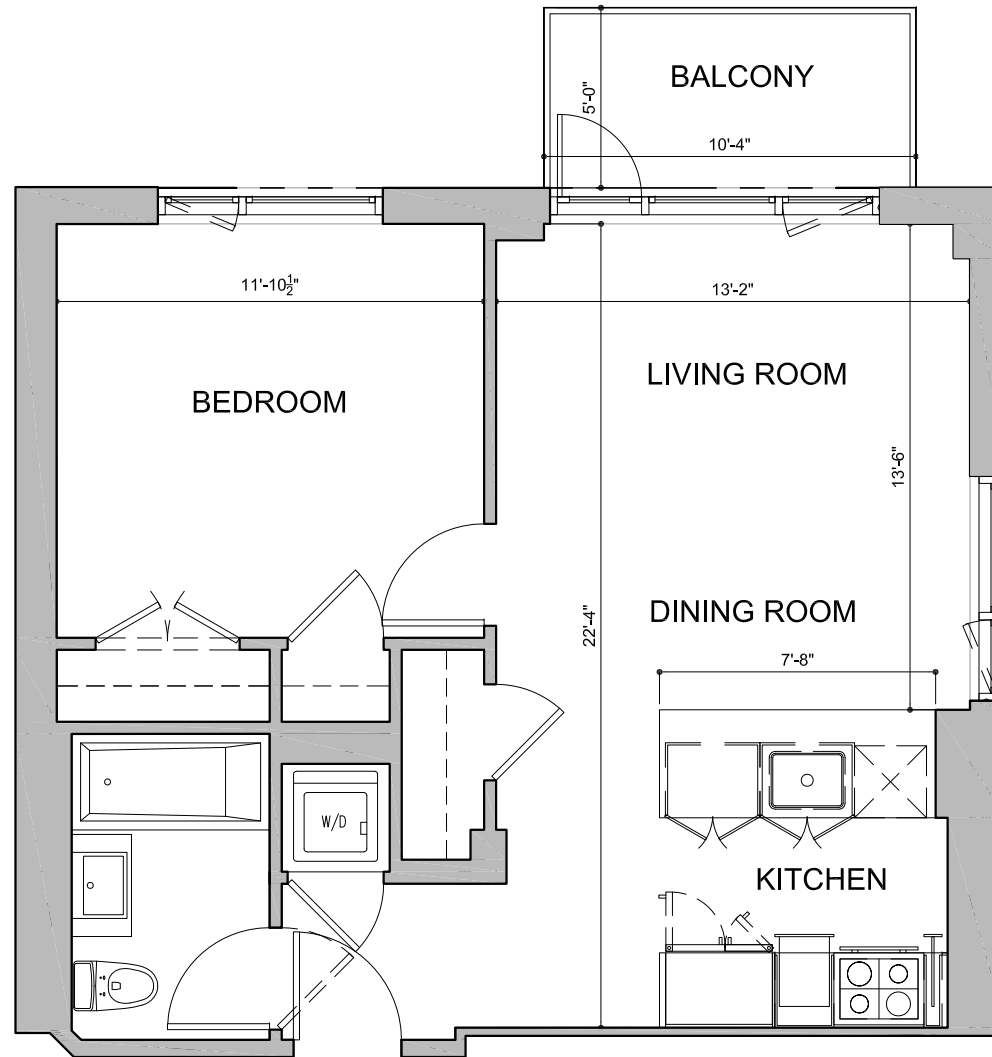


DISCLAIMER: ALL DIMENSIONS ARE APPROXIMATE. DRAWINGS MAY NOT REFLECT ALL CONSTRUCTION VARIANCES IN UNIT LINE.



225 NORTH 9TH STREET

BROOKLYN, NEW YORK



UNIT B

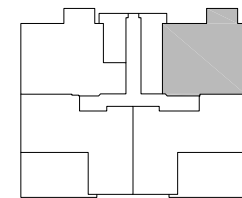
1 BEDROOM APARTMENT

7 TH FLOOR

SQ. FT. 549

BALCONY 51

TOTAL 600

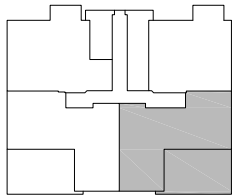
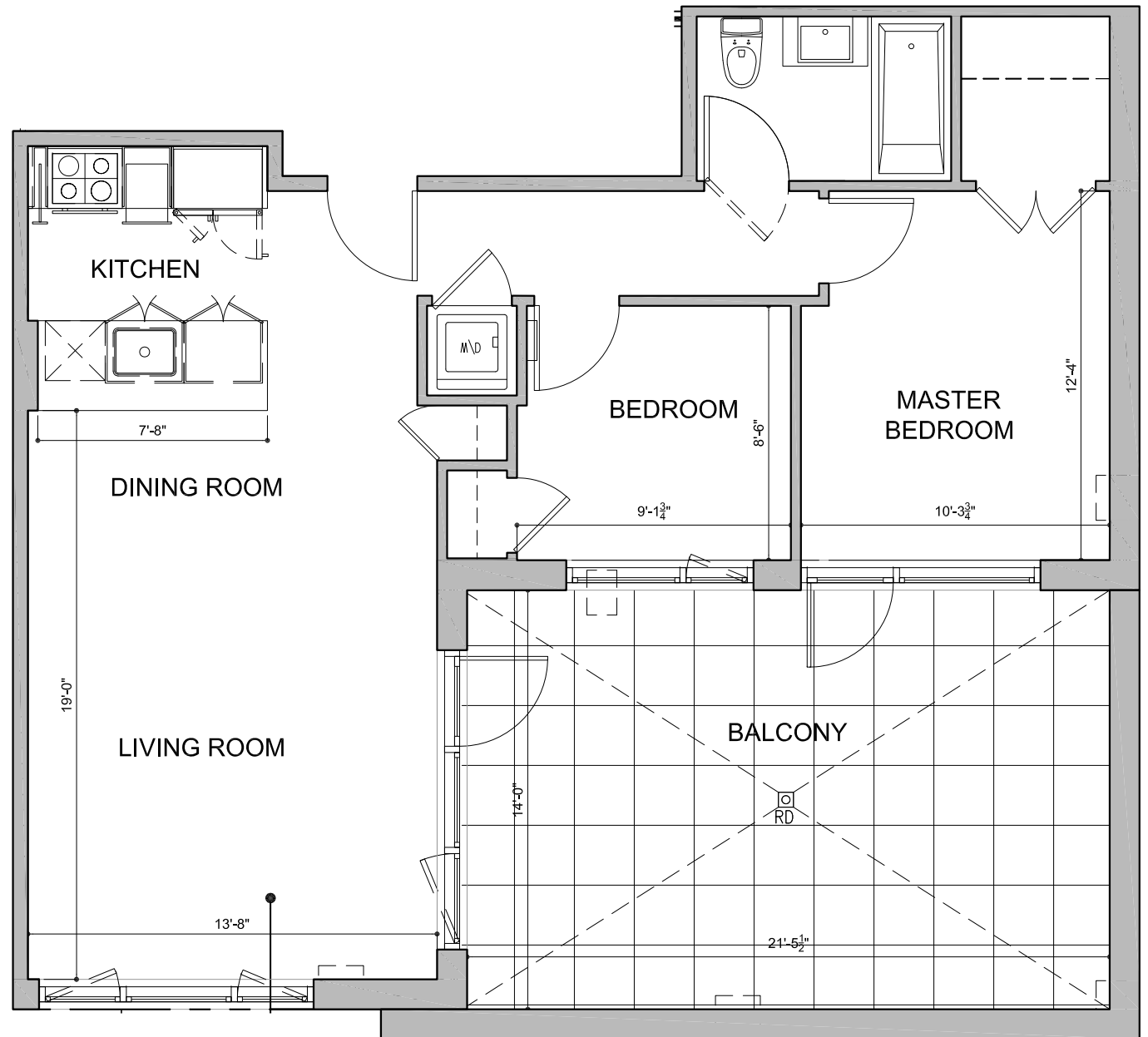


DISCLAIMER: ALL DIMENSIONS ARE APPROXIMATE. DRAWINGS MAY NOT REFLECT ALL CONSTRUCTION VARIANCES IN UNIT LINE.



225 NORTH 9TH STREET

BROOKLYN, NEW YORK



DISCLAIMER: ALL DIMENSIONS ARE APPROXIMATE. DRAWINGS MAY NOT REFLECT ALL CONSTRUCTION VARIANCES IN UNIT LINE.



UNIT C

2 BEDROOMS APARTMENT

7 TH FLOOR

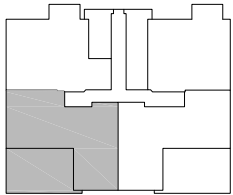
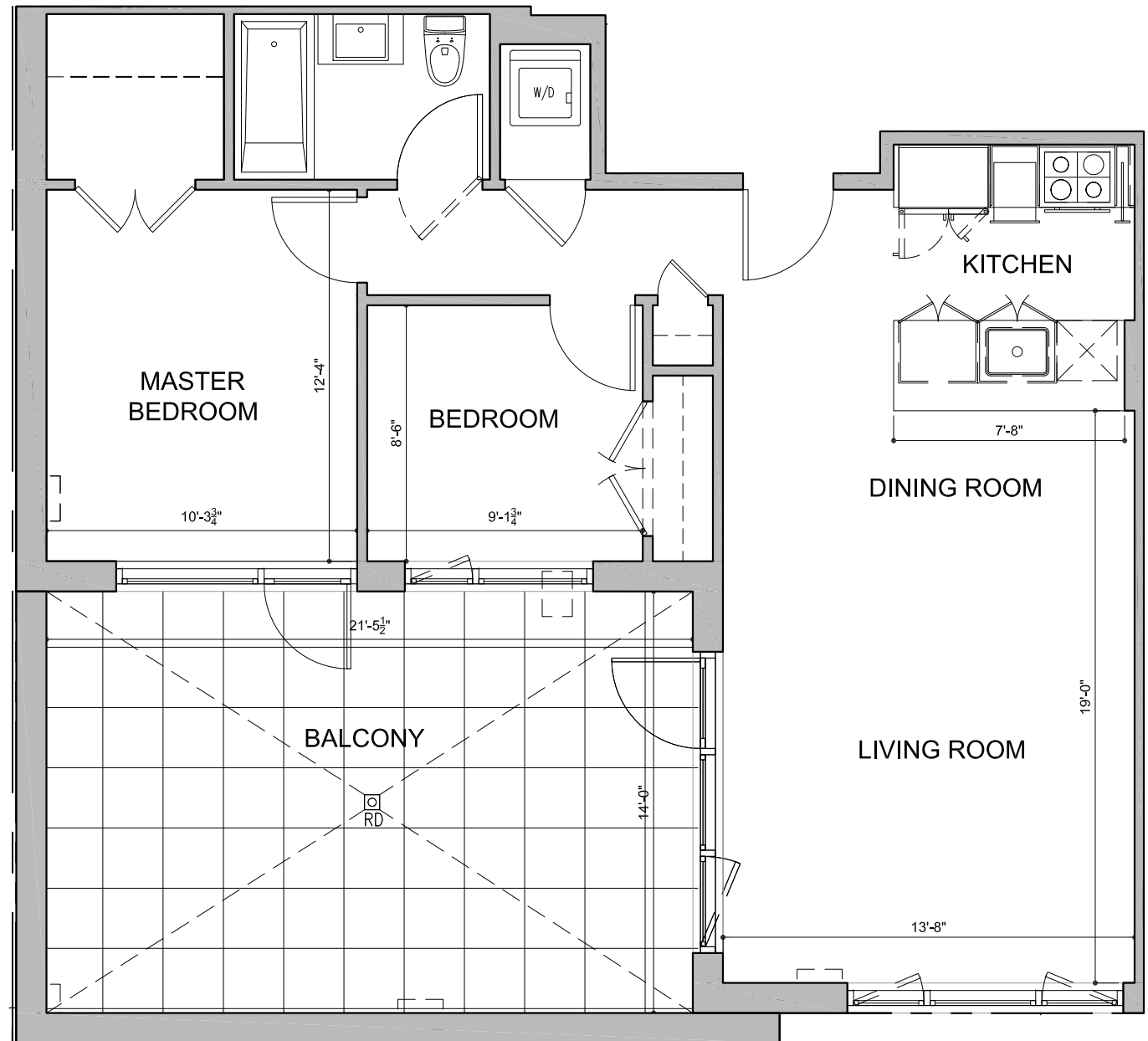
SQ. FT. 726

BALCONY 300

TOTAL 1026

225 NORTH 9TH STREET

BROOKLYN, NEW YORK



DISCLAIMER: ALL DIMENSIONS ARE APPROXIMATE. DRAWINGS MAY NOT REFLECT ALL CONSTRUCTION VARIANCES IN UNIT LINE.



UNIT D

2 BEDROOMS APARTMENT

7 TH FLOOR

SQ. FT. 751

BALCONY 300

TOTAL 1051